



FillGate

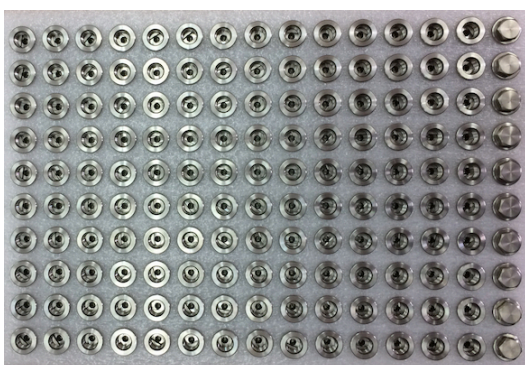
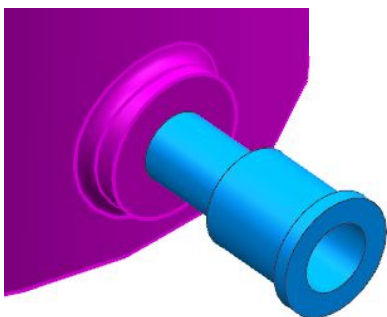
Technology For Filling

Stainless Steel Filling Valve



Whenever your product requires to be initially filled with liquid after being manufactured, your filling valve needs to be:

- ✓Highly media compatible
- ✓Long term tight
- ✓Maintenance free
- ✓Proven
- ✓Adaptable
- ✓Reliable



„...the unique closing methodology secures filling processes and maintenance free operations...”



SPECIFIC

Designed for you



MEASURABLE

Impacts your business



ACHIEVABLE

From idea to success



RELEVANT

Serves your application



TIME-BOUND

Built on time

IDEATION

DESIGNING

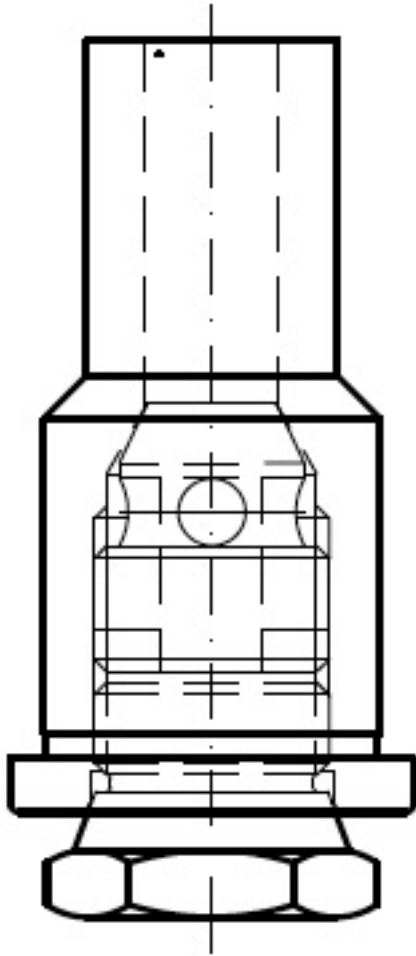
PROTOTYPING

TESTING

MANUFACTURING



OEMSYS Sp. z o.o.
 Fabryczna 1
 34-600 Limanowa
 Poland



Technical specification	
Operating temperature	-40..250°C
Max pressure	28 bar
Tightness	1*10 ⁻⁵ mbar*l/s
Filling orifice	28 mm ²
Welding diameter	15 mm
Material	1.4305

Charging heads:



- Part Numbers:** **16100** - **FillGate I/O Valve**
 16100-3 - **FillGate Closing/Protection Cap**

IDEA DESIGN PROTOTYPING TESTING MANUFACTURING

OEMSYS smart system solutions
 OEMSYS Sp. z o.o.
 Fabryczna 1
 34-600 Limanowa
 Poland

DTS/0017 Rev.1